

Building Entrance



Main Gate



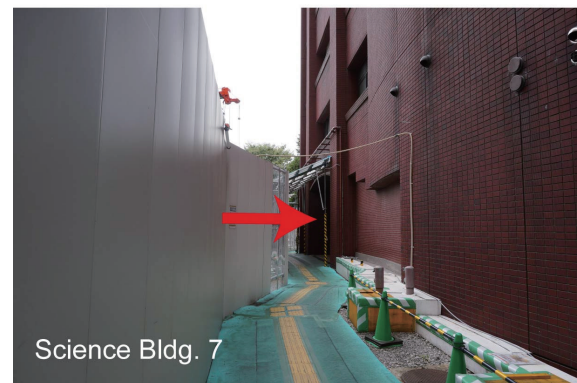
Engineering Bldg. 14



Engineering Bldg. 1



Engineering Bldg. 2



Science Bldg. 7



Science Bldg. 7

Route to Rekimoto Lab. (Shimomura Bldg. B1F, outside of the campus)



Cross the road. (From the campus)



Turn Left



Rekimoto Lab.



Rekimoto Lab. Entrance (go down stairs)



## The University of Tokyo Open Labs

Extra Event of UIST 2016 Tokyo,

**Date: Thursday, October 20, 2016.**

**10:00~13:00**

Need more demonstrations?

We have arranged an opportunity for attendees of UIST 2016 to visit labs located at the University of Tokyo.

Labs will present demonstrations, videos, posters, etc., for experience and discussion.

<https://utopenlab.github.io/>

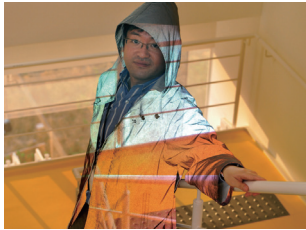
#UTOpenLab



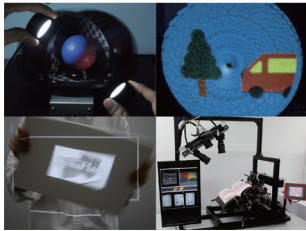
**Hirose, Tanikawa, Narumi Lab.**  
*Virtual Reality, Augmented Reality*  
Faculty of Engineering Bldg. 1, 4F, 405



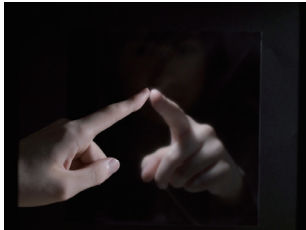
**Inami, Hiyama Lab.**  
*Information Somatics*  
Faculty of Engineering Bldg. 1, 4F, 405



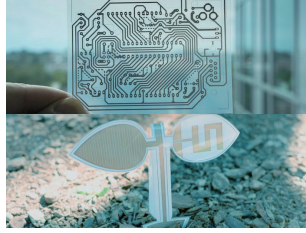
**Ishikawa, Watanabe Lab.**  
*Sensor Fusion, High Speed Imaging*  
Faculty of Engineering Bldg. 1, 5F, 505



**Shinoda, Makino Lab.**  
*Haptic Interfaces, 2D Communication*  
Faculty of Engineering Bldg. 14, 6F, 605



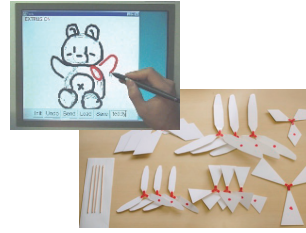
**Asami, Kawahara Lab.**  
*Ubiquitous Sensing, Inkjet Circuits*  
Faculty of Engineering Bldg. 2, 11F, 112C1



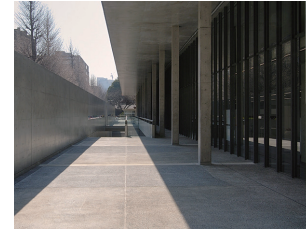
**Yatani Lab. (IIS Lab.)**  
*Ubicomp, Creativity Support Tools*  
Faculty of Engineering Bldg. 2, 10F, 101C2



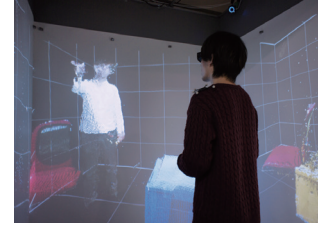
**Igarashi, Sakamoto Lab.**  
*Fabrication, Graphics*  
Faculty of Science Bldg.7, 3F, 302



**AUI 2016**  
1st Asian Workshop on User Interface  
Fukutake Hall (13:00~)



**Rekimoto Lab.**  
*Human Augmentation*  
Shimomura Bldg. B1F (outside of the campus)



## Getting to the Hongō Campus

- Hongō-sanchōme Station (Subway Marunouchi Line)  
8 minutes' walk.
- Hongō-sanchōme Station (Subway Ōedo Line)  
6 minutes' walk.
- Yushima Station or Nezu Station (Subway Chiyoda Line)  
8 minutes' walk.
- Todaïmae Station (Subway Namboku Line)  
1 minute's walk.
- Kasuga Station (Subway Mita Line)  
10 minutes' walk.
- Ochanomizu Station (JR Chūō Line, JR Sobu Line)  
<Subway>Subway Marunouchi Line (for Ikebukuro)  
→ get off at Hongō-sanchōme Station.  
<Subway>Subway Chiyoda Line (for Toride)  
→ get off at Yushima Station or Nezu Station.  
<Toei Bus>茶51 for Komagome Station South Exit or 東43 for Arakawa-dote-sōshajō  
→ get off at Todai-Akamon-mae, Todai-Seimon-mae, Todai-Nōgakubu-mae stops  
<Toei Bus>学07 for the University of Tokyo  
→ get off at Tatsukamon, Todai-Byōin-mae, Todai-Kōnai stops.
- Ueno Station (JR Yamanote Line, other lines)  
<Toei Bus>学01 for the University of Tokyo  
→ get off at Tatsukamon, Todai-Byōin-mae, Todai-Kōnai stops.
- Okachimachi Station (JR Yamanote Line, other lines),  
<Toei Bus>都02 for Otsuka Station or 上69 for Otakibashi-shakō-mae  
→ get off at Yushima-yonchōme, Hongō-sanchōme Eki-mae stops.

1 Yasuda Auditorium	14 Yayoi Auditorium Annex	Executive Management Program Office	50 Faculty of Medicine Bldg.5
2 Sanjō Conference Hall	15 Information Center	Policy Alternatives Research Institute	51 Faculty of Medicine Experimental Research Bldg.
3 Ikutokuen (Sanshō Pond)	16 Sanjō Conference Hall Tatsukamon Annex	31 Faculty of Law & Letters Bldg.1	52 Faculty of Medicine International Research Center
4 Chūō Refectory (Underground)	17 UCR Plaza	32 Faculty of Law & Letters Bldg.2	53 Clinic
5 Second Refectory	18 Gotenshita Athletic Field	33 Faculty of Law Bldg.3	54 Ward A
6 Administration Bureau	19 Baseball ground	34 Faculty of Law Bldg.4	55 Ward B
7 General Library	20 Athletic Field	35 General Research Bldg.	56 Central Bldg. (East Wing)
8 Shichitokudo (Japanese Sports Gymnasium)	21 Gotenshita Memorial Arena	36 School of Law Bldg.	57 Central Bldg. (South Wing)
9 Administration Bureau Bldg.2	22 Disability Services Office	37 Faculty of Letters Bldg.3	58 Central Clinical Service Bldg.1
International Center, Hongō Office - USTEP Office	Disability Services Office	38 Akamon General Research Bldg.	59 Central Clinical Service Bldg.2
Center for Japanese Language Education	International Students and Researchers Support Group	39 Faculty of Letters Annex	60 First Research Bldg.
Center for Research and Development of Higher Education	22 Communication Center	40 Economics Research Bldg.	61 East Clinical Research Bldg.
Graduate School of Public Policy	23 Overhead Bridge	41 Economics Research Annex (Kojima Hall)	62 Administration & Research Bldg.
Hongō Health Service Center	24 Tennis Courts (Under Construction)	42 Faculty of Education	63 Clinical Research Bldg.
Integrated Research System for Sustainability Science (IR3S)	25 Tennis Courts	43 Faculty of Medicine Bldg.1	64 South Clinical Research Bldg.
10 Kaitokukan	26 Tennis Courts	Harassment Counseling Center	65 Clinical Research Ward
11 Ikutokudo (Japanese Archery Range)	27 Entrepreneur Plaza	44 Faculty of Medicine Bldg.2	66 Advanced Clinical Research Center
12 Student Counseling Center	28 Mukougakka Faculty House	45 Medical Library	67 Energy Station
Nandemo-Sodan (One-Stop Resources) Office	29 Kadokawa Hongō Building	International Research Center for Medical Education	68 Faculty of Pharmaceutical Sciences
Communication Support Room	International Affairs Department	46 Faculty of Medicine Bldg.3	69 Pharmaceutical Sciences Research Bldg.
Peer Support Room	Facilities Department	47 Faculty of Medicine Annex of Bldg.3	70 Pharmaceutical Sciences Library
Career Support Office	30 Ito International Research Center	48 Bioscience Research Bldg.	71 Frontier Sciences for Drug Discovery Bldg.
13 Yayoi Auditorium	Ito Hall	49 Faculty of Medicine Bldg.4	72 Head Administration Office of Engineering (Reppinkan)

73 Faculty of Engineering Bldg.1	93 Faculty of Engineering Bldg.12 Annex 2	114 Agricultural and Life Sciences Museum	137 Information Technology Center Annex
74 Faculty of Engineering Bldg.2	94 Wind Engineering Lab.	115 Life Sciences Research Bldg.	138 Cryogenic Research Center
75 Faculty of Engineering Bldg.3	95 High Voltage Electron Microscope	116 Veterinary Medical Center	
76 Faculty of Engineering Bldg.4	96 I-REF Bldg.	117 Biotechnology Research Center	
77 Faculty of Engineering Bldg.5	97 Faculty of Science Bldg.1 (East) (Under Construction)	118 Food Science Bldg.	
78 Faculty of Engineering Bldg.6	98 Faculty of Science Bldg.1 (Center) Koshiba Hall	119 Life Sciences Research Bldg.B	
79 Faculty of Engineering Bldg.7	99 Faculty of Science Bldg.1 (West) International Center for Elementary Particle Physics	120 Protein Research Laboratory	
80 Faculty of Engineering Bldg.8	100 Faculty of Science Bldg.2	121 Interfaculty Initiative in Information Studies & Graduate School of Interdisciplinary Information Studies	
81 Faculty of Engineering Bldg.9	101 Faculty of Science Bldg.3	122 iii-Fukutake Hall	
Institute of Engineering Innovation	102 Faculty of Science Bldg.4	123 iii-Daiwa Ubiquitous Computing Research Bldg.	
82 Faculty of Engineering Bldg.10	103 Faculty of Science Bldg.7	124 Earthquake Research Institute Bldg.1	
83 Faculty of Engineering Bldg.11	104 Faculty of Science Chemistry Bldg.	125 Earthquake Research Institute Bldg.2	
84 Faculty of Engineering Bldg.12	105 Faculty of Agriculture Bldg.1	126 Earthquake Research Institute Bldg.3	
85 Faculty of Engineering Bldg.13	106 Faculty of Agriculture Bldg.2	127 Institute of Molecular and Cellular Biosciences	
86 Faculty of Engineering Bldg.14	107 Faculty of Agriculture Bldg.2, Annex	128 Institute for Advanced Studies on Asia	
Takeda Bldg.	108 Faculty of Agriculture Bldg.3	129 Institute of Social Science	
VLSI Design and Education Center	Asian Natural Environmental Science Center	130 Historiographical Institute	
88 Seakeeping Tank; Ship Model Basin	109 Faculty of Agriculture Bldg.5	131 University Museum	
89 Experimental Tank	110 Faculty of Agriculture Bldg.6	132 Micro Analysis Laboratory, Tandem Accelerator (MALI)	
90 Cavitation Tunnel	111 Faculty of Agriculture Bldg.7A	133 Environmental Science Center	
91 Monozukuri Lab.	112 Faculty of Agriculture Bldg.7B	134 Environmental Science Center Annex	
92 Faculty of Engineering Bldg.12 Annex 1	113 University Library for Agricultural and Life Sciences	135 Isotope Center	
		136 Information Technology Center	

## Hongō Campus

0m 100m 200m 300m

